

West Saanich Rd between Markham St and Old West Saanich Rd

April 01, 2019 To April 05, 2019



The data presented here is for information purposes only and should not be considered authoritative for construction, geotechnical, engineering, navigational, legal, or other site-specific uses. The information shared is owned by the Transportation Division of the Engineering Department at the District of Saanich. Accuracy is not guaranteed.

Start Date: 1-Apr-19
 Start Time: 0:00
 Station ID: M0040-01

Location 1: West Saanich Rd between Markham St and Old West Saanich Rd

Note: Markham St and Old West Saanich Rd

DATE:	April 1, 2019		April 2, 2019		April 3, 2019		April 4, 2019		April 5, 2019		WK AVG		WK AVG	HOURLY
	MON		TUE		WED		THURS		FRI				CH 1+2	%
Time:	NB	SB	NB	SB	NB	SB	NB	SB	NB	SB	NB	SB		
12-1 AM			15	7	15	9	15	5			15	7	22	0.2%
1-2 AM			7	4	7	2	2	5			5	4	9	0.1%
2-3 AM			2	2	4	3	3	2			3	2	5	0.0%
3-4 AM			7	7	2	4	2	4			4	5	9	0.1%
4-5 AM			8	11	11	16	11	12			10	13	23	0.2%
5-6 AM			34	47	30	44	26	47			30	46	76	0.6%
6-7 AM			126	164	119	158	121	161			122	161	283	2.2%
7-8 AM			293	569	296	531	291	564			293	555	848	6.6%
8-9 AM			384	665	409	675	412	637			402	659	1061	8.2%
9-10 AM			408	406	378	429	363	461			383	432	815	6.3%
10-11 AM			376	394	360	405	346	394			361	398	758	5.9%
11-12 PM			409	456	348	438	408	412			388	435	824	6.4%
12-1 PM			417	459	422	429	401	428			413	439	852	6.6%
1-2 PM			449	386	401	397	408	408			419	397	816	6.3%
2-3 PM			461	419	478	413	477	415			472	416	888	6.9%
3-4 PM			553	575	579	510	673	576			602	554	1155	8.9%
4-5 PM			790	563	743	541	881	536			805	547	1351	10.4%
5-6 PM			707	469	648	434	739	515			698	473	1171	9.1%
6-7 PM			358	301	343	266	348	334			350	300	650	5.0%
7-8 PM			271	247	266	205	314	272			284	241	525	4.1%
8-9 PM			225	141	165	132	246	181			212	151	363	2.8%
9-10 PM			179	85	149	106	166	129			165	107	271	2.1%
10-11 PM			92	41	75	21	84	32			84	31	115	0.9%
11-12 AM			28	4	36	6	30	19			31	10	41	0.3%
LANES			6599	6422	6284	6174	6767	6549			6550	6382	12932	100.0%
TOTAL			13021		12458		13316				12940			
	MON		TUE		WED		THURS		FRI		WK AVG			

PEAK HOUR					TOTAL VEHICALS-PEAK PERIODS		2 HOUR PEAK INTERVALS			
MAX. 7 - 9 am PEAK HOUR	1061	⇒	8.2%	between 8-9 AM	6106	⇒ 6 HR TOTAL	2 HR AM (7 - 9 AM)			
MAX. 7 - 11 am PEAK HOUR	1061	⇒	8.2%	between 8-9 AM	4431	⇒ 4 HR TOTAL	VEH / HR	VEH / 2HR	2 HR %	
							7-8 AM	848	1909	14.8%
							8-9 AM	1061		
MAX. 11 am - 1 pm PEAK HOUR	852	⇒	6.6%	between 12-1 PM	24 HOUR FACTORS					
MAX. 11 am - 3 pm PEAK HOUR	888	⇒	6.9%	between 2-3 PM						
MAX. 4 - 6 pm PEAK HOUR	1351	⇒	10.4%	between 4-5 PM						
MAX. 3 - 6 pm PEAK HOUR	1351	⇒	10.4%	between 4-5 PM	2.12	⇒ 6-24 HR FACT.	2 HR NOON (11 - 1 PM)			
					2.92	⇒ 4-24 HR FACT.	VEH / HR	VEH / 2HR	2 HR %	
							11-12 PM	824	1676	13.0%
							12-1 PM	852		
							2 HR PM (4 - 6 PM)			
							VEH / HR	VEH / 2HR	2 HR %	
							4-5 PM	1351	2522	19.5%
							5-6 PM	1171		

West Saanich Rd between Markham St and Old West Saanich Rd

Northbound

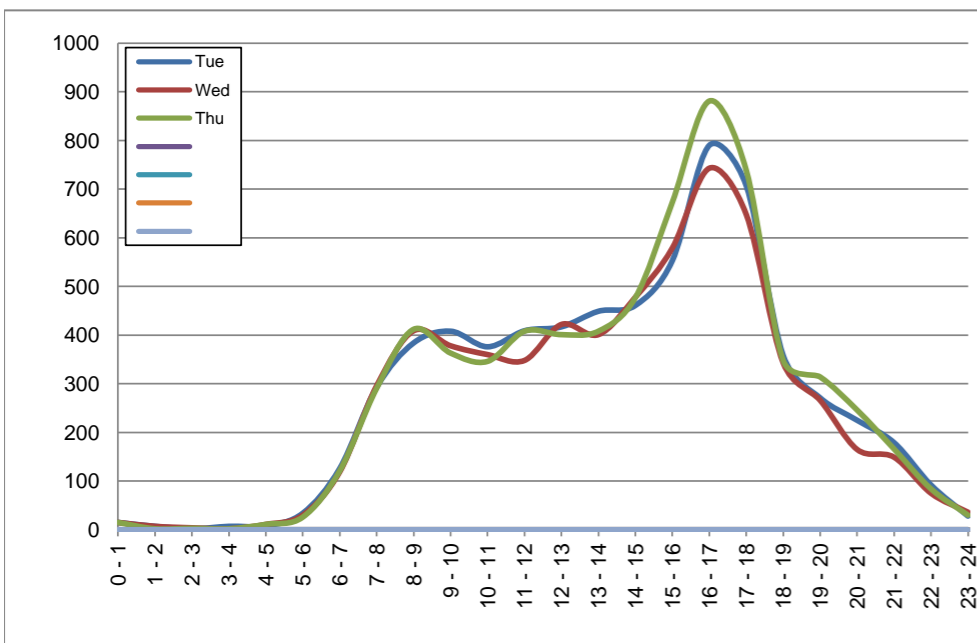
April 2, 2019 to April 4, 2019

Hourly Volumes

Time Period	Tue	Wed	Thu			
	Apr 2	Apr 3	Apr 4			
0 - 1	15	15	15			
1 - 2	7	7	2			
2 - 3	2	4	3			
3 - 4	7	2	2			
4 - 5	8	11	11			
5 - 6	34	30	26			
6 - 7	126	119	121			
7 - 8	293	296	291			
8 - 9	384	409	412			
9 - 10	408	378	363			
10 - 11	376	360	346			
11 - 12	409	348	408			
12 - 13	417	422	401			
13 - 14	449	401	408			
14 - 15	461	478	477			
15 - 16	553	579	673			
16 - 17	790	743	881			
17 - 18	707	648	739			
18 - 19	358	343	348			
19 - 20	271	266	314			
20 - 21	225	165	246			
21 - 22	179	149	166			
22 - 23	92	75	84			
23 - 24	28	36	30			
Day Total	6599	6284	6767			

15-Minute Volumes

Time Start	Tue	Wed	Thu				Time Start	Tue	Wed	Thu			
	Apr 2	Apr 3	Apr 4					Apr 2	Apr 3	Apr 4			
0:00	4	5	1				12:00	103	94	104			
0:15	4	6	10				12:15	105	114	107			
0:30	3	2	4				12:30	113	110	100			
0:45	4	2	0				12:45	96	104	90			
1:00	2	1	0				13:00	111	94	96			
1:15	1	2	2				13:15	112	93	118			
1:30	2	2	0				13:30	114	101	88			
1:45	2	2	0				13:45	112	113	106			
2:00	0	1	0				14:00	94	99	115			
2:15	0	1	0				14:15	110	120	132			
2:30	0	0	3				14:30	112	130	110			
2:45	2	2	0				14:45	145	129	120			
3:00	1	0	1				15:00	139	137	165			
3:15	2	0	0				15:15	122	155	163			
3:30	2	0	1				15:30	152	153	156			
3:45	2	2	0				15:45	140	134	189			
4:00	1	2	2				16:00	180	184	236			
4:15	2	4	1				16:15	204	174	208			
4:30	0	1	4				16:30	201	199	217			
4:45	5	4	4				16:45	205	186	220			
5:00	5	4	8				17:00	180	179	208			
5:15	3	7	5				17:15	200	157	193			
5:30	15	8	8				17:30	182	178	182			
5:45	11	11	5				17:45	145	134	156			
6:00	14	14	11				18:00	105	97	96			
6:15	27	24	23				18:15	103	106	92			
6:30	41	42	59				18:30	76	82	89			
6:45	44	39	28				18:45	74	58	71			
7:00	56	47	51				19:00	78	76	104			
7:15	80	63	73				19:15	68	70	96			
7:30	82	90	79				19:30	64	71	70			
7:45	75	96	88				19:45	61	49	44			
8:00	76	77	87				20:00	64	54	63			
8:15	109	84	77				20:15	59	36	83			
8:30	96	126	111				20:30	51	46	62			
8:45	103	122	137				20:45	51	29	38			
9:00	122	125	96				21:00	45	48	45			
9:15	79	91	78				21:15	47	36	43			
9:30	87	77	99				21:30	52	39	38			
9:45	120	85	90				21:45	35	26	40			
10:00	100	105	84				22:00	31	32	36			
10:15	86	80	94				22:15	30	21	27			
10:30	91	94	77				22:30	18	13	12			
10:45	99	81	91				22:45	13	9	9			
11:00	85	74	100				23:00	10	15	11			
11:15	103	83	98				23:15	3	10	5			
11:30	109	94	106				23:30	9	7	9			
11:45	112	97	104				23:45	6	4	5			



Site notes:

West Saanich Rd between Markham St and Old West Saanich Rd

Southbound

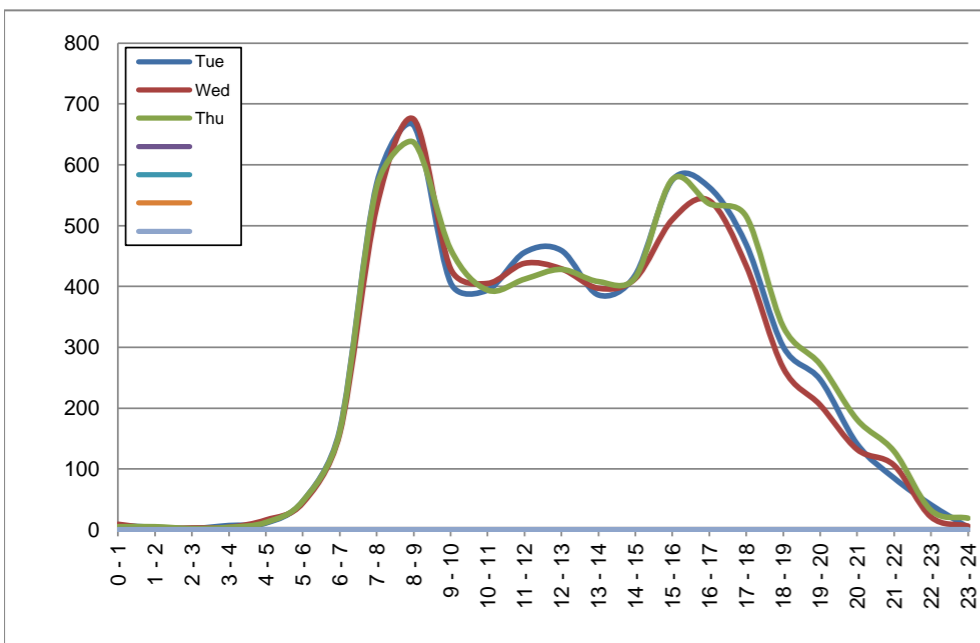
April 2, 2019 to April 4, 2019

Hourly Volumes

Time Period	Tue	Wed	Thu			
	Apr 2	Apr 3	Apr 4			
0 - 1	7	9	5			
1 - 2	4	2	5			
2 - 3	2	3	2			
3 - 4	7	4	4			
4 - 5	11	16	12			
5 - 6	47	44	47			
6 - 7	164	158	161			
7 - 8	569	531	564			
8 - 9	665	675	637			
9 - 10	406	429	461			
10 - 11	394	405	394			
11 - 12	456	438	412			
12 - 13	459	429	428			
13 - 14	386	397	408			
14 - 15	419	413	415			
15 - 16	575	510	576			
16 - 17	563	541	536			
17 - 18	469	434	515			
18 - 19	301	266	334			
19 - 20	247	205	272			
20 - 21	141	132	181			
21 - 22	85	106	129			
22 - 23	41	21	32			
23 - 24	4	6	19			
Day Total	6422	6174	6549			

15-Minute Volumes

Time Start	Tue	Wed	Thu				Time Start	Tue	Wed	Thu			
	Apr 2	Apr 3	Apr 4					Apr 2	Apr 3	Apr 4			
0:00	2	2	0				12:00	105	101	105			
0:15	2	1	3				12:15	106	118	114			
0:30	2	4	1				12:30	140	90	99			
0:45	1	2	1				12:45	108	120	110			
1:00	0	0	2				13:00	98	94	104			
1:15	1	0	0				13:15	99	89	96			
1:30	3	1	1				13:30	87	99	106			
1:45	0	1	2				13:45	102	115	102			
2:00	1	3	1				14:00	104	105	88			
2:15	1	0	0				14:15	104	84	107			
2:30	0	0	0				14:30	97	117	101			
2:45	0	0	1				14:45	114	107	119			
3:00	0	0	2				15:00	160	136	131			
3:15	2	1	1				15:15	131	124	128			
3:30	3	3	1				15:30	131	124	145			
3:45	2	0	0				15:45	153	126	172			
4:00	1	2	1				16:00	123	127	128			
4:15	2	2	3				16:15	150	134	137			
4:30	1	4	4				16:30	142	132	128			
4:45	7	8	4				16:45	148	148	143			
5:00	9	3	8				17:00	139	127	154			
5:15	3	11	8				17:15	133	124	162			
5:30	15	11	7				17:30	97	93	107			
5:45	20	19	24				17:45	100	90	92			
6:00	25	20	24				18:00	86	77	101			
6:15	32	34	28				18:15	66	69	80			
6:30	47	48	56				18:30	84	59	75			
6:45	60	56	53				18:45	65	61	78			
7:00	87	87	86				19:00	70	47	71			
7:15	131	113	130				19:15	65	66	85			
7:30	155	128	154				19:30	58	43	59			
7:45	196	203	194				19:45	54	49	57			
8:00	167	165	172				20:00	39	43	47			
8:15	177	180	180				20:15	47	33	38			
8:30	174	182	156				20:30	29	24	56			
8:45	147	148	129				20:45	26	32	40			
9:00	103	99	119				21:00	26	27	36			
9:15	116	128	117				21:15	25	32	30			
9:30	98	98	124				21:30	21	35	47			
9:45	89	104	101				21:45	13	12	16			
10:00	105	115	97				22:00	12	8	15			
10:15	93	104	104				22:15	13	3	3			
10:30	107	105	105				22:30	10	4	7			
10:45	89	81	88				22:45	6	6	7			
11:00	115	98	100				23:00	3	1	7			
11:15	105	88	92				23:15	0	3	2			
11:30	121	135	103				23:30	0	1	6			
11:45	115	117	117				23:45	1	1	4			



Site notes:

Vehicle Speed Summary

Saanich Engineering Department

Count Id: [M0040-01](#)

Filename: [West Saanich Rd between Markham St and Old West Saanich Rd-Apr-2019.xlsm](#)

Location: West Saanich Rd between Markham St and Old West Saanich Rd

Note: Markham St and Old West Saanich Rd

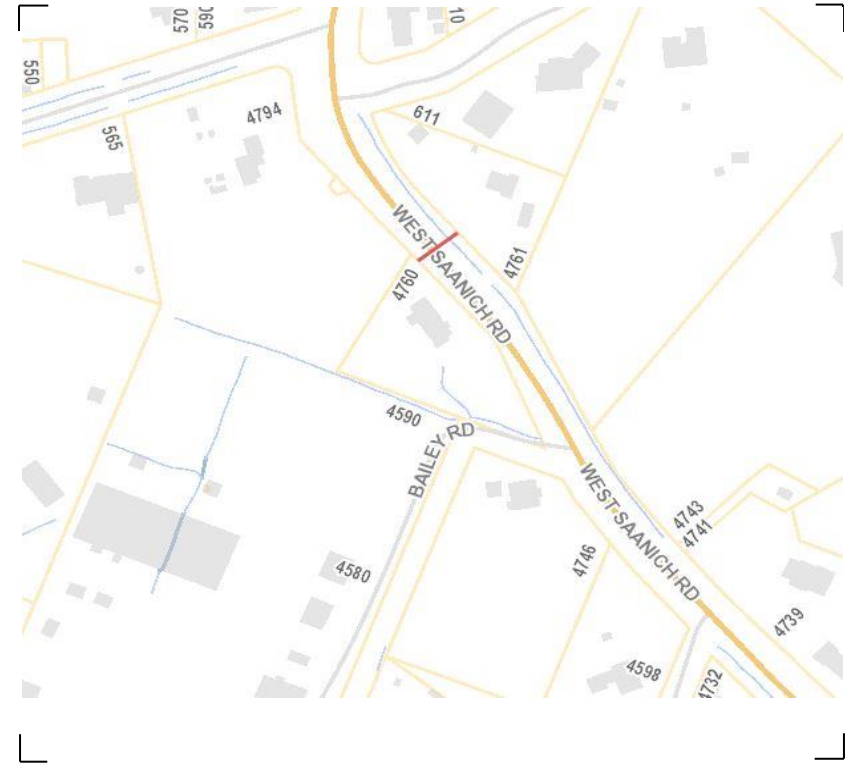
Direction: **North-South**

Dates: **April 01, 2019 To April 05, 2019**

Filtered data

AVG. SPEED	34 mph	55 km/h
50 % SPEED	34 mph	56 km/h
85 % SPEED	38 mph	61 km/h
95 % SPEED	40 mph	65 km/h

Location Map



West Saanich Rd between Markham St and Old West Saanich Rd

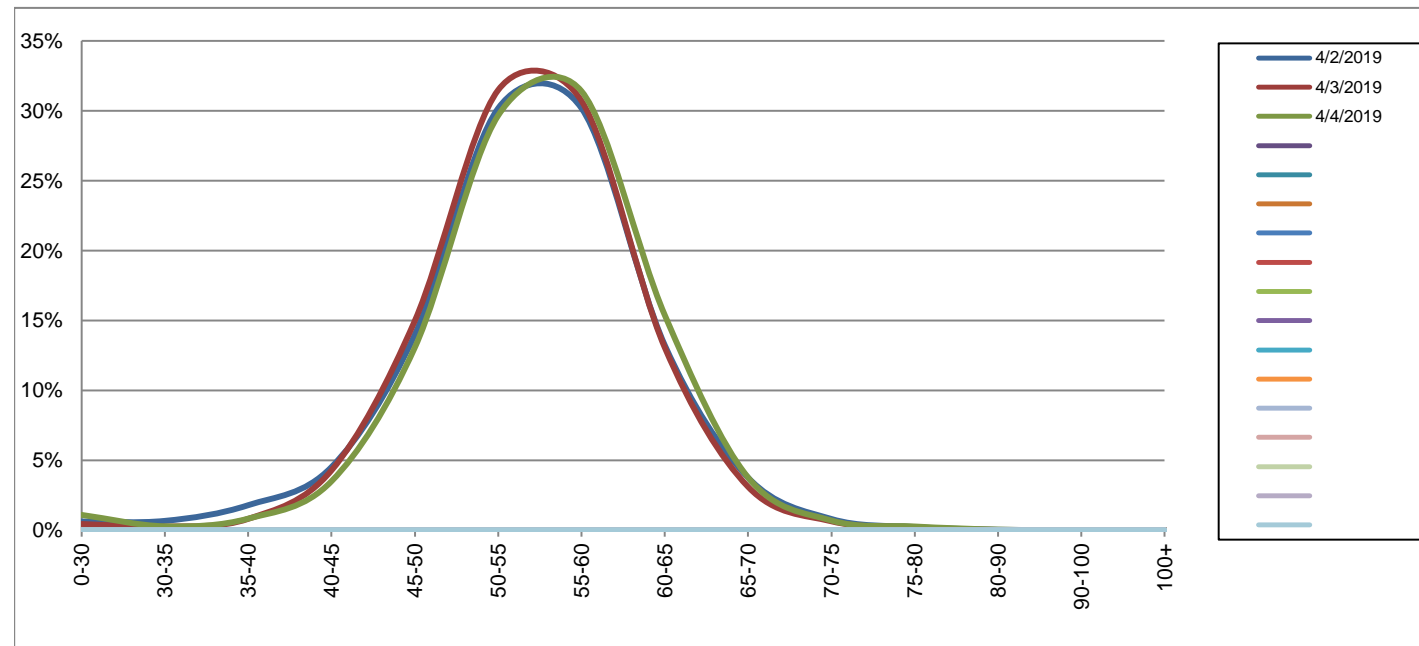
Northbound

April 2, 2019 to April 4, 2019

Daily Speed Bin Percentages															Daily Speed Bin Volumes														Total	Avg.
Bin #	1	2	3	4	5	6	7	8	9	10	11	12	13	14	1	2	3	4	5	6	7	8	9	10	11	12	13	14	Volume	Speed
Bin Speeds	0-30	30-35	35-40	40-45	45-50	50-55	55-60	60-65	65-70	70-75	75-80	80-90	90-100	100+	0-30	30-35	35-40	40-45	45-50	50-55	55-60	60-65	65-70	70-75	75-80	80-90	90-100	100+		
4/2/2019	0.6%	0.7%	1.8%	4.5%	14.0%	30.2%	30.2%	13.2%	3.8%	0.8%	0.2%	0.0%	0.0%	0.0%	41	44	118	298	923	1991	1992	873	248	53	15	2	1	0	6599	54
4/3/2019	0.4%	0.3%	0.8%	4.3%	15.0%	31.5%	30.7%	13.1%	3.1%	0.6%	0.2%	0.0%	0.0%	0.0%	28	16	51	269	941	1978	1930	821	195	40	12	1	1	1	6284	54
4/4/2019	1.1%	0.3%	0.8%	3.5%	13.1%	29.7%	31.4%	15.4%	3.8%	0.7%	0.3%	0.0%	0.0%	0.0%	74	19	56	237	884	2007	2125	1041	255	47	18	3	0	1	6767	55
Total	0.7%	0.4%	1.1%	4.1%	14.0%	30.4%	30.8%	13.9%	3.6%	0.7%	0.2%	0.0%	0.0%	0.0%	143	79	225	804	2748	5976	6047	2735	698	140	45	6	2	19650	55	

Speed Data Summary

Bin #	1	2	3	4	5	6	7	8	9	10	11	12	13	14	Total
Bin Speeds	0-30	30-35	35-40	40-45	45-50	50-55	55-60	60-65	65-70	70-75	75-80	80-90	90-100	100+	
Survey Total	143	79	225	804	2748	5976	6047	2735	698	140	45	6	2	2	19650
% Total	0.7%	0.4%	1.1%	4.1%	14.0%	30.4%	30.8%	13.9%	3.6%	0.7%	0.2%	0.0%	0.0%	0.0%	100%
Accumulated %	0.7%	1.1%	2.3%	6.4%	20.4%	50.8%	81.5%	95.5%	99.0%	99.7%	99.9%	100.0%	100.0%	100%	
Inverse Accum. %	99.3%	98.9%	97.7%	93.6%	79.6%	49.2%	18.5%	4.5%	1.0%	0.3%	0.1%	0.0%	0.0%	0.0%	
Average Speed	55 KM/H														



Site notes:

West Saanich Rd between Markham St and Old West Saanich Rd

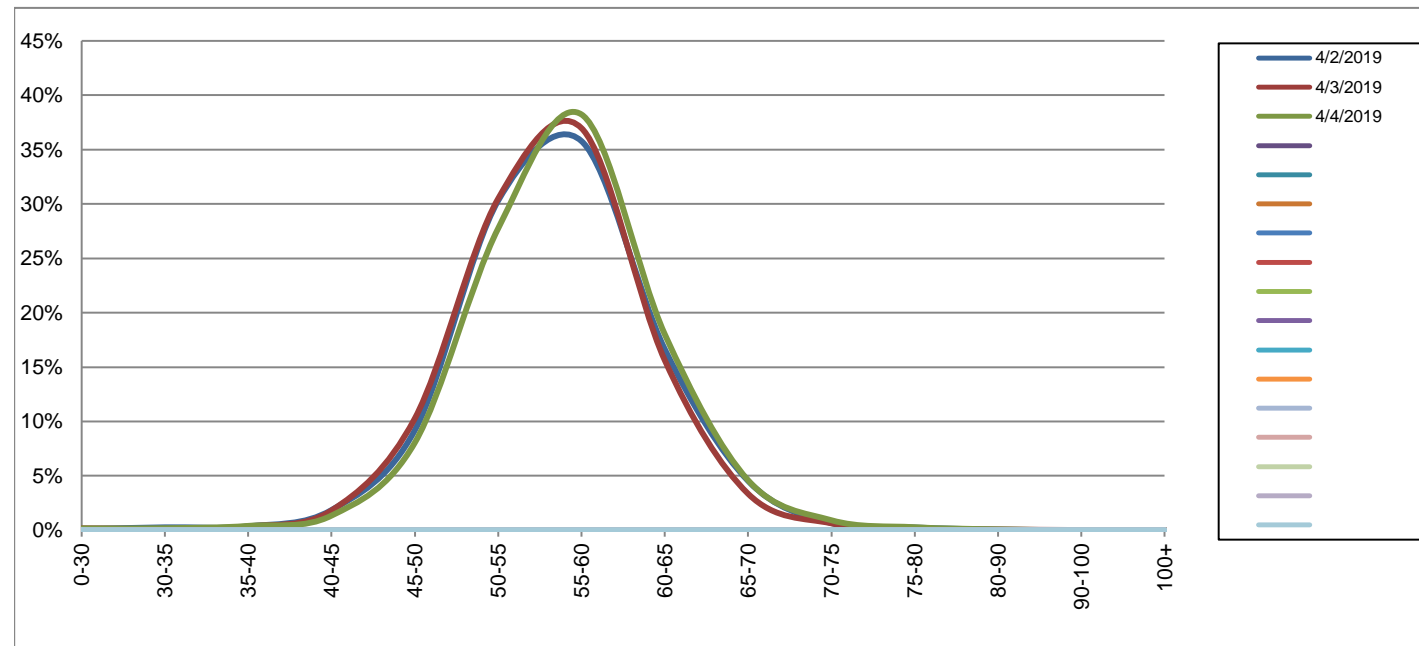
Southbound

April 2, 2019 to April 4, 2019

Daily Speed Bin Percentages														Daily Speed Bin Volumes														Total	Avg.	
Bin #	1	2	3	4	5	6	7	8	9	10	11	12	13	14	1	2	3	4	5	6	7	8	9	10	11	12	13	14	Volume	Speed
Bin Speeds	0-30	30-35	35-40	40-45	45-50	50-55	55-60	60-65	65-70	70-75	75-80	80-90	90-100	100+	0-30	30-35	35-40	40-45	45-50	50-55	55-60	60-65	65-70	70-75	75-80	80-90	90-100	100+		
4/2/2019	0.1%	0.3%	0.4%	1.9%	9.2%	30.3%	35.8%	16.6%	4.5%	0.7%	0.2%	0.0%	0.0%	0.0%	7	17	23	119	590	1946	2298	1069	291	42	16	3	1	0	6422	56
4/3/2019	0.2%	0.1%	0.3%	1.8%	10.3%	30.5%	37.0%	15.6%	3.4%	0.6%	0.1%	0.1%	0.0%	0.0%	11	7	21	112	634	1882	2283	965	207	39	7	4	1	1	6174	56
4/4/2019	0.2%	0.2%	0.4%	1.3%	8.0%	27.7%	38.2%	18.0%	4.6%	0.9%	0.3%	0.1%	0.0%	0.0%	11	12	26	88	527	1817	2504	1180	301	60	18	5	0	0	6549	56
Total	0.2%	0.2%	0.4%	1.7%	9.1%	29.5%	37.0%	16.8%	4.2%	0.7%	0.2%	0.1%	0.0%	0.0%	29	36	70	319	1751	5645	7085	3214	799	141	41	12	2	1	19145	56

Speed Data Summary

Bin #	1	2	3	4	5	6	7	8	9	10	11	12	13	14	Total
Bin Speeds	0-30	30-35	35-40	40-45	45-50	50-55	55-60	60-65	65-70	70-75	75-80	80-90	90-100	100+	
Survey Total	29	36	70	319	1751	5645	7085	3214	799	141	41	12	2	1	19145
% Total	0.2%	0.2%	0.4%	1.7%	9.1%	29.5%	37.0%	16.8%	4.2%	0.7%	0.2%	0.1%	0.0%	0.0%	100%
Accumulated %	0.2%	0.3%	0.7%	2.4%	11.5%	41.0%	78.0%	94.8%	99.0%	99.7%	99.9%	100.0%	100.0%	100%	
Inverse Accum. %	99.8%	99.7%	99.3%	97.6%	88.5%	59.0%	22.0%	5.2%	1.0%	0.3%	0.1%	0.0%	0.0%	0.0%	
Average Speed	56 KM/H														



Site notes:

West Saanich Rd between Markham St and Old West Saanich Rd

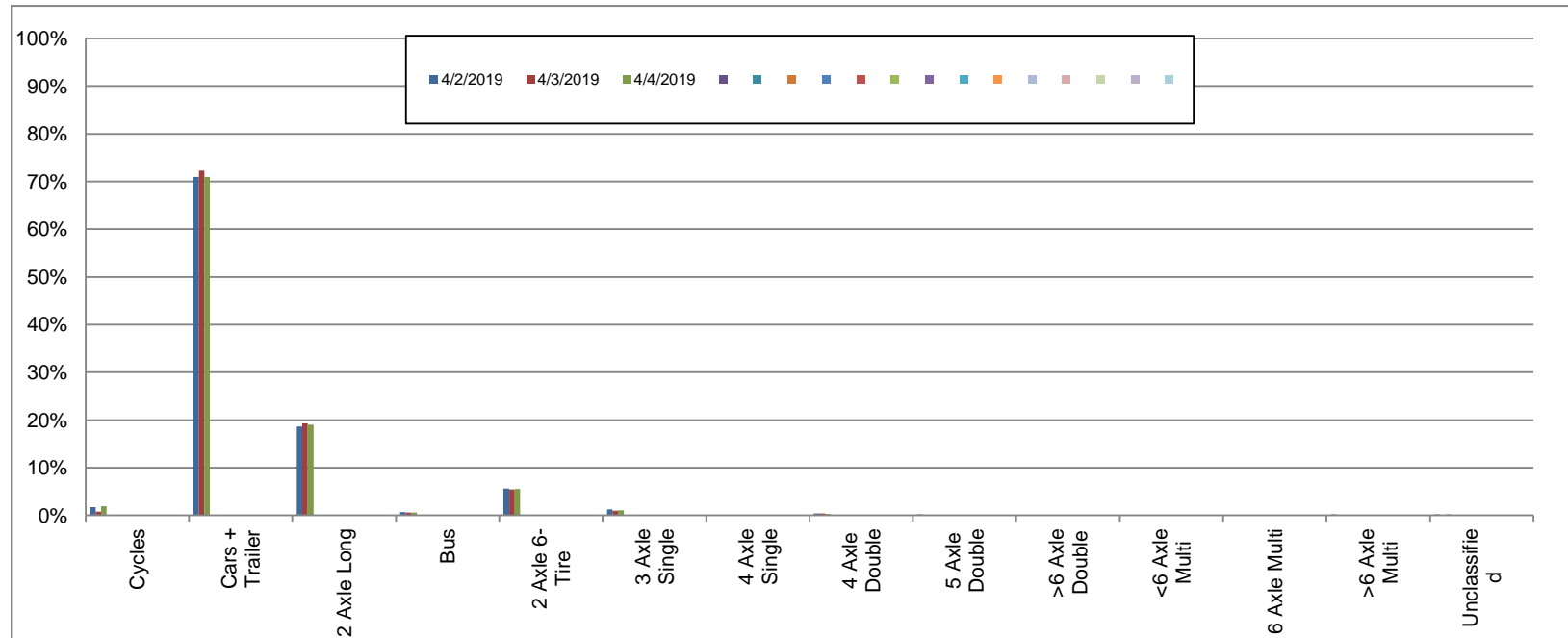
Northbound

April 2, 2019 to April 4, 2019

Daily Class Bin Percentages															Daily Class Bin Volumes											Total Volume			
Bin #	1	2	3	4	5	6	7	8	9	10	11	12	13	14	1	2	3	4	5	6	7	8	9	10	11		12	13	14
Bin Class	Cycles	Cars + Trailer	2 Axle Long	Bus	2 Axle 6-Tire	3 Axle Single	4 Axle Single	4 Axle Double	5 Axle Double	>6 Axle Double	<6 Axle Multi	6 Axle Multi	>6 Axle Multi	Unclassified	Cycles	Cars + Trailer	2 Axle Long	Bus	2 Axle 6-Tire	3 Axle Single	4 Axle Single	4 Axle Double	5 Axle Double	>6 Axle Double	<6 Axle Multi	6 Axle Multi	>6 Axle Multi	Unclassified	
4/2/2019	1.7%	70.9%	18.6%	0.7%	5.6%	1.3%	0.1%	0.4%	0.2%	0.1%	0.0%	0.0%	0.2%	0.2%	114	4679	1230	44	372	83	4	28	13	5	0	0	15	12	6599
4/3/2019	0.8%	72.3%	19.3%	0.6%	5.5%	1.0%	0.0%	0.4%	0.1%	0.1%	0.0%	0.0%	0.0%	0.0%	49	4541	1211	35	343	63	3	24	6	8	0	0	0	1	6284
4/4/2019	1.9%	71.0%	19.0%	0.6%	5.5%	1.1%	0.0%	0.3%	0.1%	0.1%	0.0%	0.0%	0.0%	0.2%	128	4804	1288	40	373	72	2	23	10	9	0	0	2	16	6767
Total	1.5%	71.4%	19.0%	0.6%	5.5%	1.1%	0.0%	0.4%	0.1%	0.1%	0.0%	0.0%	0.1%	0.1%	291	14024	3729	119	1088	218	9	75	29	22	0	0	17	29	19650

Class Data Summary

Bin #	1	2	3	4	5	6	7	8	9	10	11	12	13	14	Total Volume
Bin Class	Cycles	Cars + Trailer	2 Axle Long	Bus	2 Axle 6-Tire	3 Axle Single	4 Axle Single	4 Axle Double	5 Axle Double	>6 Axle Double	<6 Axle Multi	6 Axle Multi	>6 Axle Multi	Unclassified	Total Volume
Survey Total	291	14024	3729	119	1088	218	9	75	29	22	0	0	17	29	19650
% Total	1.5%	71.4%	19.0%	0.6%	5.5%	1.1%	0.0%	0.4%	0.1%	0.1%	0.0%	0.0%	0.1%	0.1%	100%
Accumulated %	1.5%	72.8%	91.8%	92.4%	98.0%	99.1%	99.1%	99.5%	99.7%	99.8%	99.8%	99.8%	99.9%	100.0%	
Inv. Accum. %	98.5%	27.2%	8.2%	7.6%	2.0%	0.9%	0.9%	0.5%	0.3%	0.2%	0.2%	0.2%	0.1%	0.0%	



Classification Descriptions

Bin #	Bin Description
1	Motorcycles
2	Passenger cars, including those with recreational trailers
3	2-axle pick-ups, vans, and RVs, including those with recreational trailers
4	Buses
5	2-axle, 6-tire single units
6	3-axle single units
7	4-axle single units
8	3-axle or 4-axle double unit
9	5-axle double unit
10	6-, 7-, or 8-axle double unit
11	5-axle multiple unit
12	6-axle multiple unit
13	7-or-more-axle multiple unit
14	Vehicles that could not be classified

Site notes:

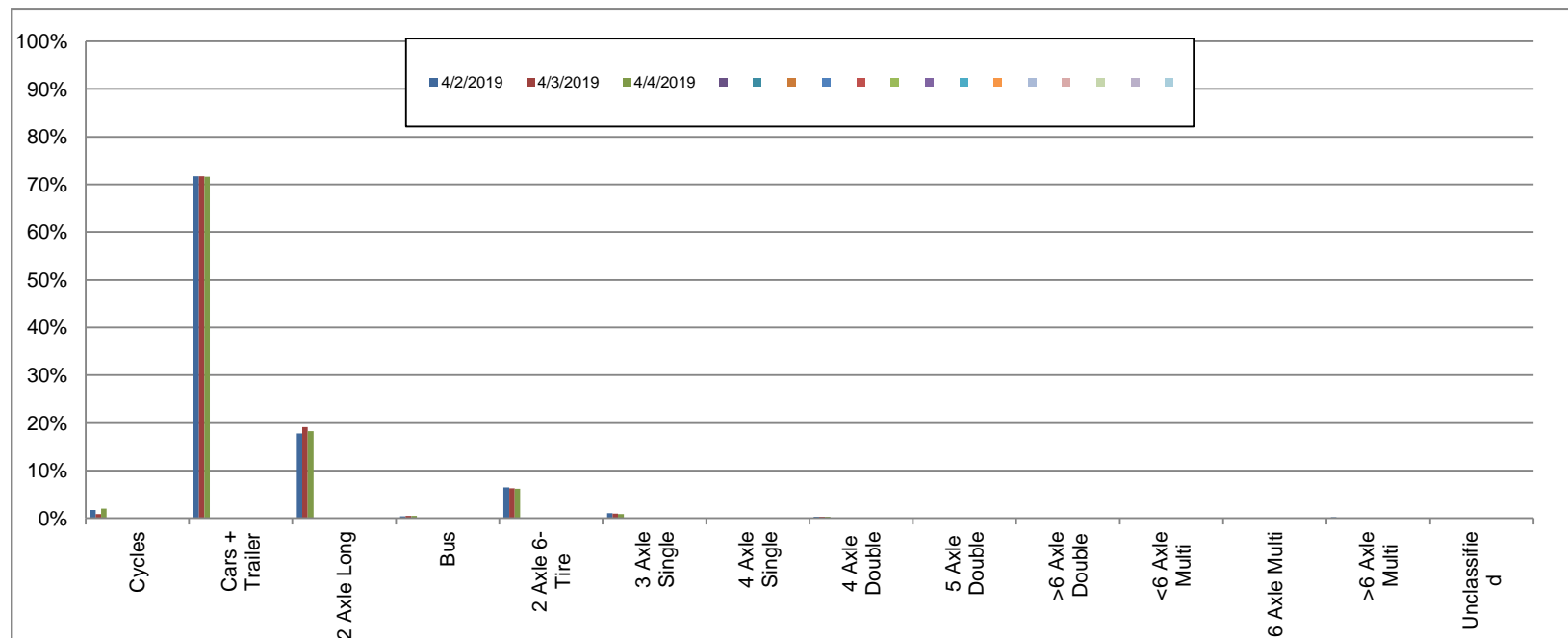
West Saanich Rd between Markham St and Old West Saanich Rd

Southbound
April 2, 2019 to April 4, 2019

Daily Class Bin Percentages															Daily Class Bin Volumes											Total Volume			
Bin #	1	2	3	4	5	6	7	8	9	10	11	12	13	14	1	2	3	4	5	6	7	8	9	10	11		12	13	14
Bin Class	Cycles	Cars + Trailer	2 Axle Long	Bus	2 Axle 6-Tire	3 Axle Single	4 Axle Single	4 Axle Double	5 Axle Double	>6 Axle Double	<6 Axle Multi	6 Axle Multi	>6 Axle Multi	Unclassified	Cycles	Cars + Trailer	2 Axle Long	Bus	2 Axle 6-Tire	3 Axle Single	4 Axle Single	4 Axle Double	5 Axle Double	>6 Axle Double	<6 Axle Multi	6 Axle Multi	>6 Axle Multi	Unclassified	
4/2/2019	1.7%	71.7%	17.7%	0.4%	6.4%	1.0%	0.1%	0.3%	0.1%	0.1%	0.0%	0.0%	0.2%	0.1%	109	4605	1139	26	414	67	8	22	4	8	0	0	11	9	6422
4/3/2019	0.8%	71.7%	19.1%	0.5%	6.3%	0.9%	0.0%	0.3%	0.1%	0.1%	0.0%	0.0%	0.0%	0.0%	51	4426	1182	29	389	58	2	19	7	9	0	0	0	2	6174
4/4/2019	2.0%	71.6%	18.2%	0.5%	6.2%	0.9%	0.0%	0.3%	0.0%	0.1%	0.0%	0.0%	0.0%	0.2%	131	4688	1193	32	406	59	3	18	2	6	0	0	1	10	6549
Total	1.5%	71.7%	18.4%	0.5%	6.3%	1.0%	0.1%	0.3%	0.1%	0.1%	0.0%	0.0%	0.1%	0.1%	291	13719	3514	87	1209	184	13	59	13	23	0	0	12	21	19145

Class Data Summary

Bin #	1	2	3	4	5	6	7	8	9	10	11	12	13	14	Total Volume
Bin Class	Cycles	Cars + Trailer	2 Axle Long	Bus	2 Axle 6-Tire	3 Axle Single	4 Axle Single	4 Axle Double	5 Axle Double	>6 Axle Double	<6 Axle Multi	6 Axle Multi	>6 Axle Multi	Unclassified	
Survey Total	291	13719	3514	87	1209	184	13	59	13	23	0	0	12	21	19145
% Total	1.5%	71.7%	18.4%	0.5%	6.3%	1.0%	0.1%	0.3%	0.1%	0.1%	0.0%	0.0%	0.1%	0.1%	100%
Accumulated %	1.5%	73.2%	91.5%	92.0%	98.3%	99.3%	99.3%	99.6%	99.7%	99.8%	99.8%	99.8%	99.9%	100.0%	
Inv. Accum. %	98.5%	26.8%	8.5%	8.0%	1.7%	0.7%	0.7%	0.4%	0.3%	0.2%	0.2%	0.2%	0.1%	0.0%	



Classification Descriptions

Bin #	Bin Description
1	Motorcycles
2	Passenger cars, including those with recreational trailers
3	2-axle pick-ups, vans, and RVs, including those with recreational trailers
4	Buses
5	2-axle, 6-tire single units
6	3-axle single units
7	4-axle single units
8	3-axle or 4-axle double unit
9	5-axle double unit
10	6-, 7-, or 8-axle double unit
11	5-axle multiple unit
12	6-axle multiple unit
13	7-or-more-axle multiple unit
14	Vehicles that could not be classified

Site notes: